



New Construction

PROGRESS UPDATE
November 2023

Southeast Pre K-12 School





PROJECT SUMMARY

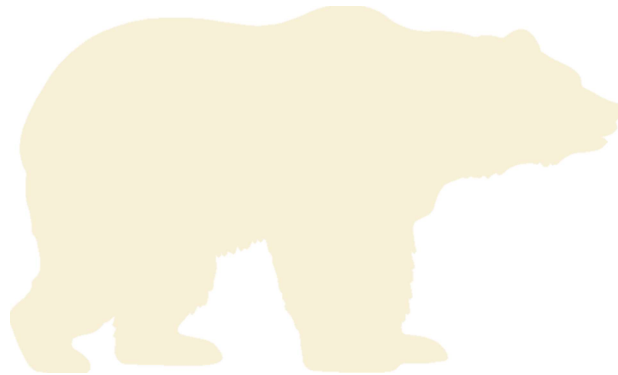
Site Development & Landscaping

November 2023 Progress

- Install Permanent Mailboxes– 100%

Upcoming Progress

- Downspout Storm Piping



PROJECT SUMMARY

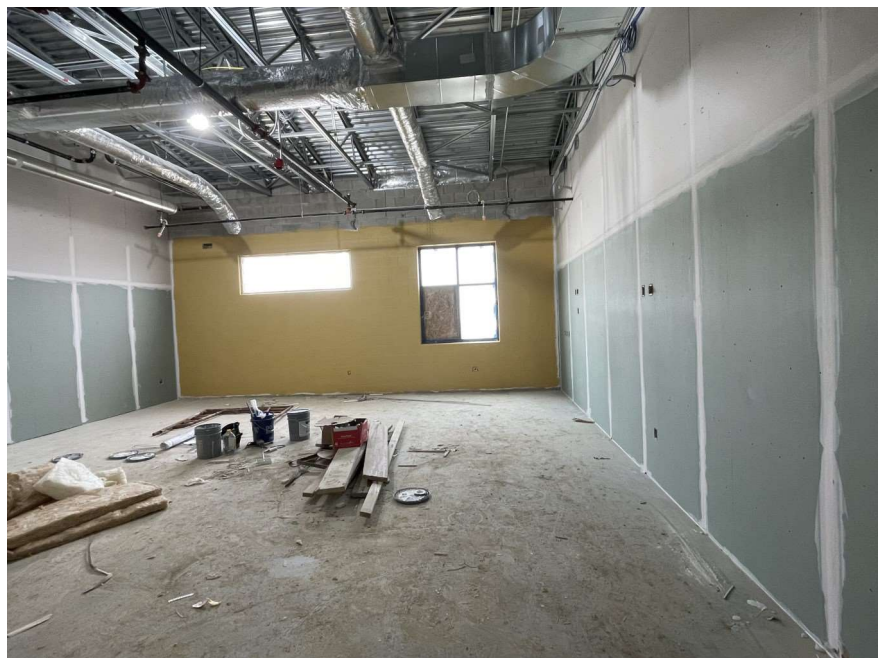
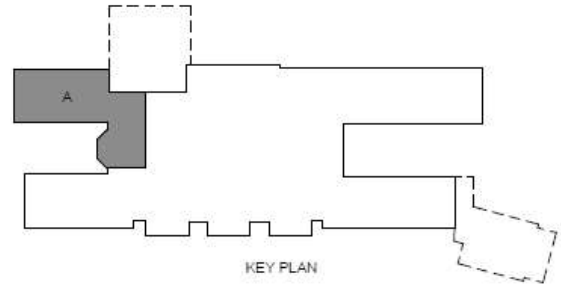
Area A

November 2023 Progress

- Fire Protection Rough-in– 100%
- Hang Wall Board– 95%
- Roof Finishes– 90%
- Prime Paint– 100%
- Drywall Finish Taping– 50%
- Finish Paint– 30%
- Tech Cabling– 50%

Upcoming Progress

- Drywall Finish Taping
- Finish Paint
- Ceiling Grid
- Tech Cabling



PROJECT SUMMARY

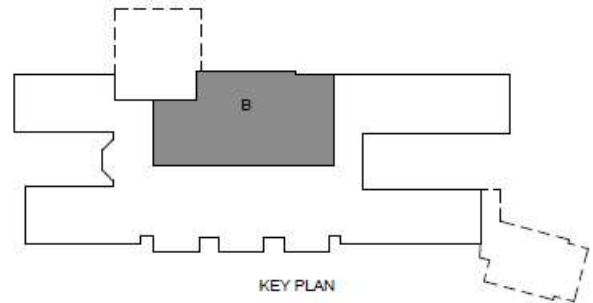
Area B

November 2023 Progress

- Temp Roof Dry-in– 80%
- Second Floor MEP Overhead Ongoing– 85%
- Cavity Insulation and Brick Veneer– 100%
- Temp Enclosure– 90%
- Exterior Framing– 100%
- Form and Pour Stair Seating– 100%

Upcoming Progress

- Prep CMU Walls for Paint
- Continue Temp Roof Dry-in
- Second Floor MEP Overhead Rough-in



PROJECT SUMMARY

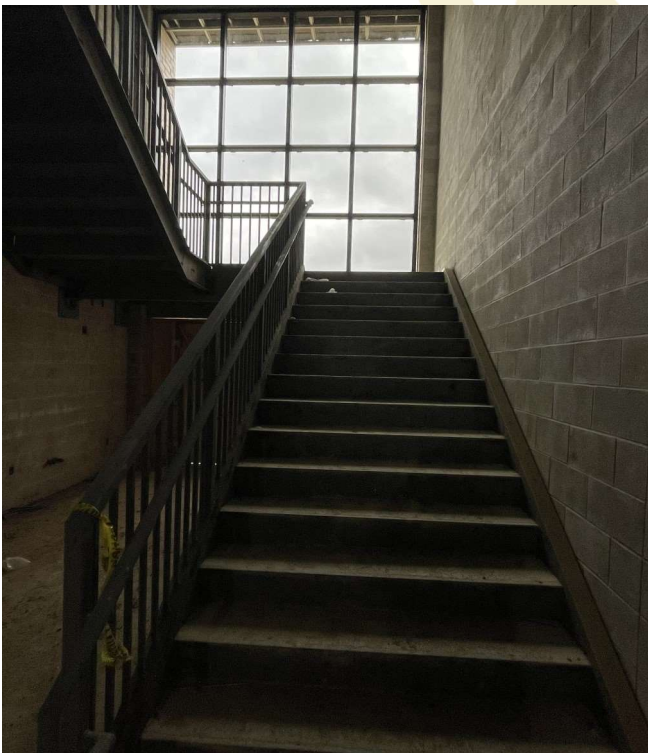
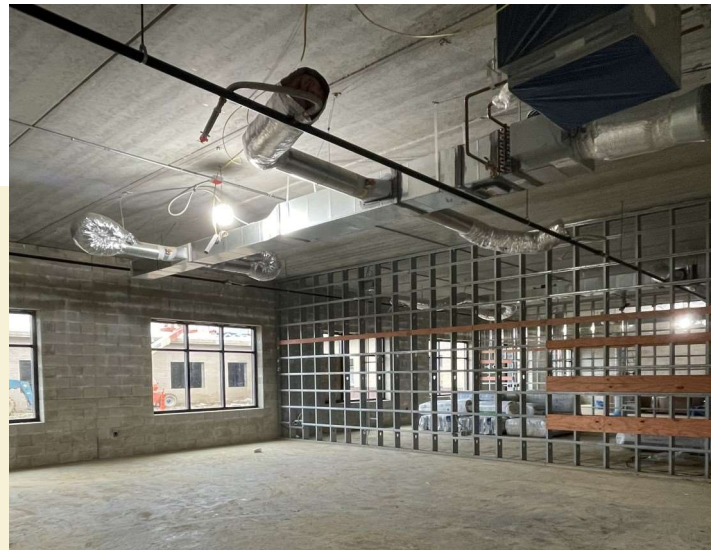
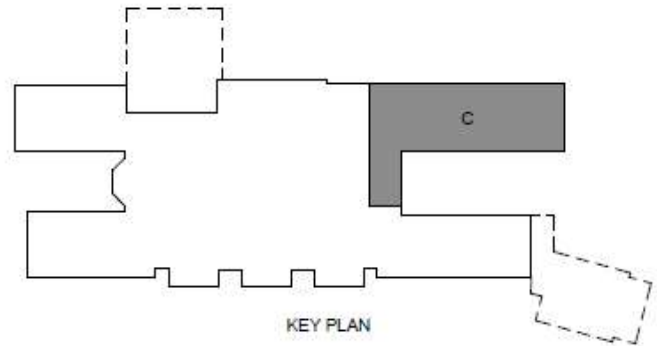
Area C

November 2023 Progress

- Second Floor Interior Metal Framing– 100%
- MEP Piping– 90%
- Stairwell Ongoing– 100%
- Pour Stair– 100%
- Set Windows– 100%
- Prep CMU Walls for Paint– 100%
- Set Curtain Wall– 100%
- Temp Heat– 100%

Upcoming Progress

- Continue MEP Piping
- Prime Paint
- Hang Wall Board



PROJECT SUMMARY

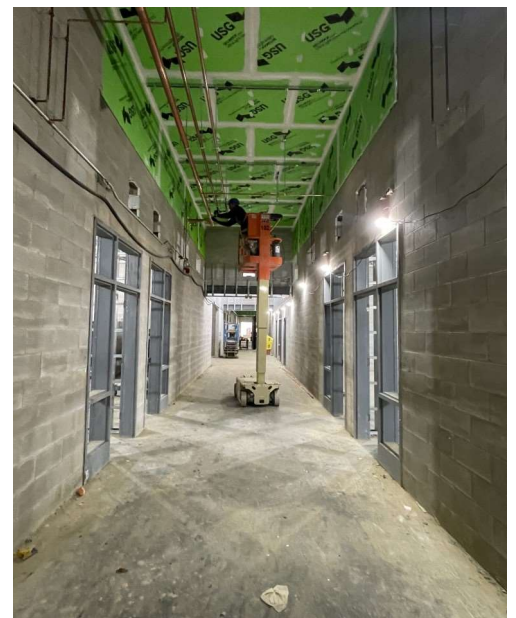
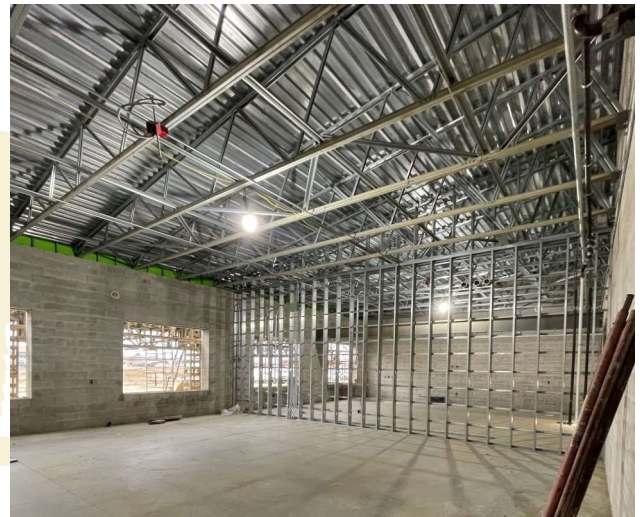
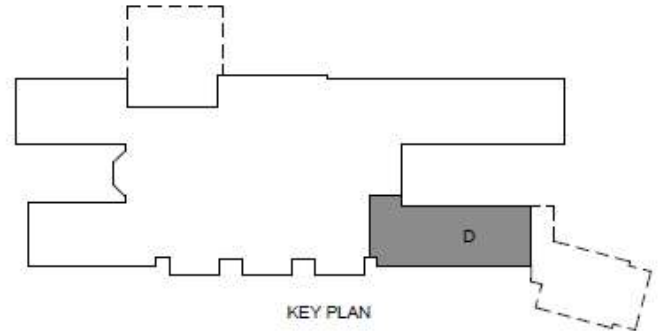
Area D

November 2023 Progress

- MEP Rough – In– 50%
- MEP Piping– 50%
- Set Metal Deck– 100%
- Cavity Insulation and Brick Veneer– 100%
- Interior Metal Framing– 100%
- Set Windows– 60%
- Densglass Taping– 70%
- Exterior Framing– 70%

Upcoming Progress

- MEP Rough – In
- MEP Piping
- Set Windows
- Exterior Framing
- Prep CMU Walls for Paint



PROJECT SUMMARY

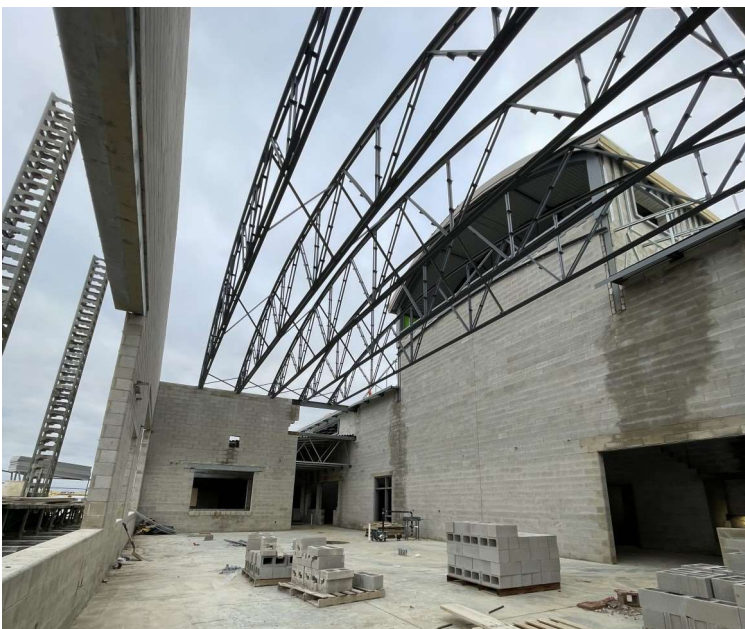
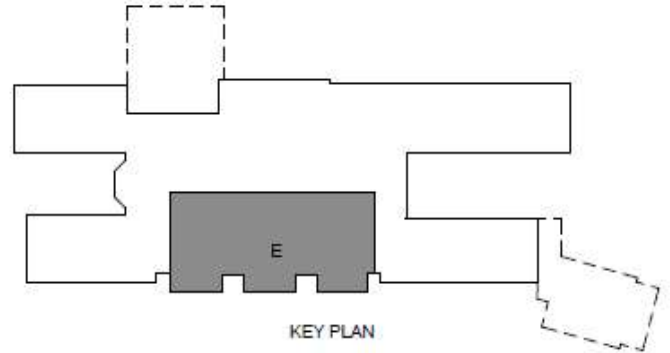
Area E

November 2023 Progress

- Set Trusses– 100%
- Set Metal Deck– 100%
- Temp Roof Dry-in– 90%
- Prep CMU Walls for Paint– 50%
- Second Floor MEP Overhead Rough-in– 85%
- Temp Enclosure– 40%
- Set Barrel Joists– 100%

Upcoming Progress

- Continue MEP Overhead Rough-in
- Continue Temp Roof Dry-in
- Cavity Insulation and Brick Veneer
- Temp Heat
- Prep Stair Seating

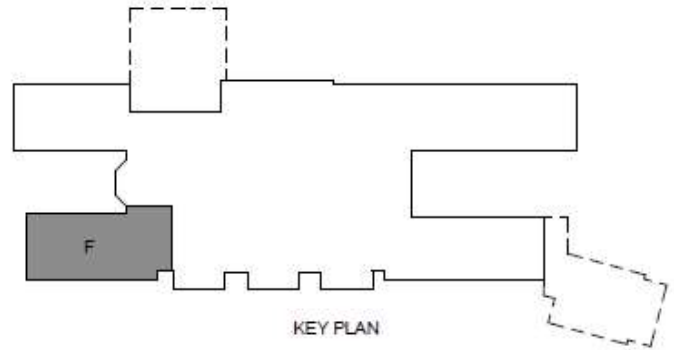


PROJECT SUMMARY

Area F

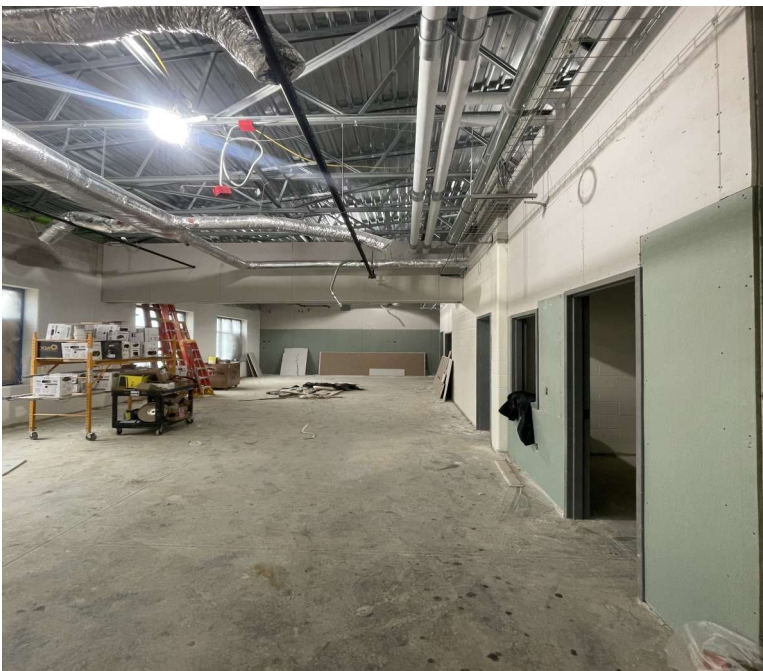
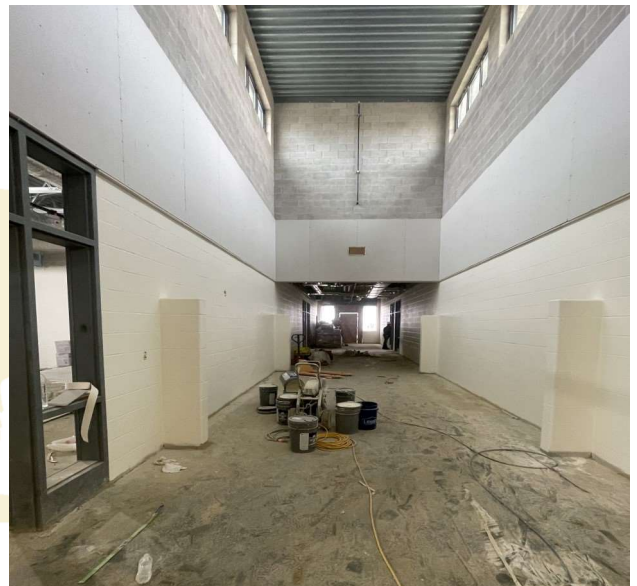
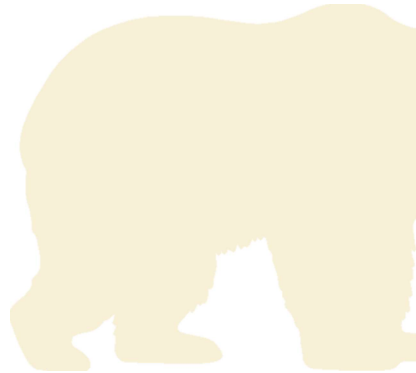
November 2023 Progress

- Prime Paint– 100%
- Hang Wall Board– 95%
- Roof Finishes– 85%
- Tech Cabling– 35%
- Finish Paint– 5%



Upcoming Progress

- Roof Finishes
- Finish Paint
- Drywall Finish Taping
- Tech Cabling

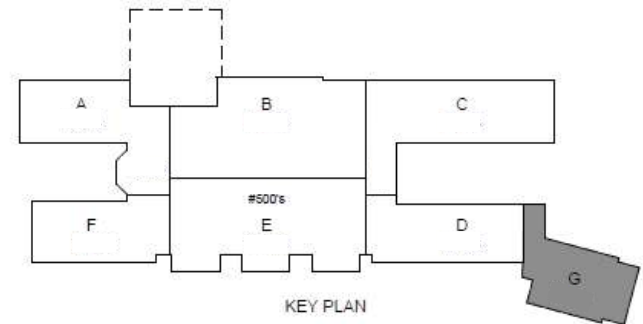


PROJECT SUMMARY

Area G

November 2023 Progress

- MEP Rough-In- 40%
- Temp Roof Dry-in- 95%
- MEP Piping- 40%
- Set Metal Deck- 100%
- Cavity Insulation and Brick Veneer- 50%



Upcoming Progress

- MEP Piping
- MEP Rough-In
- Prep CMU Walls for Paint
- Cavity Insulation and Brick Veneer

